

# QUICK REFERENCE GUIDE

## We are grateful for and inspired by you!

Through every twist and turn the past several months has thrown our way, we are reminded of how fortunate it is to be connected to customers like you. We are both grateful for and inspired by what you do. Where many have been focused inward, you have been reaching out and supporting the people who depend on you. We've seen your resolve to discover new and novel ways to connect with those you serve, and we understand how important these connections are to you. However, we want you to know that they are equally important to us as everyone on your team.

As a professional, we understand the pressure you feel in providing mental health services in a country where we have a huge deficit of mental health professionals - this pressure being exasperated by the pandemic, which has thrown the country into a mental health crisis.

Our assessment has always been helping professionals make a quick and accurate diagnosis. Still, our digital assessments on Q-global™ has further helped professionals connect with clients remotely and manage the current situation.

Our R&D has been hard at work norming assessments for the Indian population and bringing regional language translations. The quality of our tests have become unparalleled due to the painstaking work and dedication of our product teams put forward to bring you the best products based on the needs of professionals in the country.

We thank you for trusting us to provide the assessments that you need. Our commitment to cater to our customer's needs is always on the top of our minds as we work towards serving you better in the coming years. Therefore, we have put together this **quick reference guide** to help you see the vast selection of products that we have available to you.

**Pearson Clinical Assessments (PCA)**, a division of Pearson, has a long history related to some of the most respected names in publishing. PCA have been at the forefront of test publishing for over 80 years. It is responsible for the publication of many tests which have now become the international standards in their fields. **We cater to India and the Indian subcontinent markets.**

Our best wishes for your continued success and to those you serve!

Warm Regards,  
Pearson Clinical Assessments Team, India



# INDEX

**TELEPRACTICE** | Page 1

**Q-GLOBAL** | Page 2

**INDIA NORMED PRODUCTS** | Page 3

**COGNITION** | Page 5

**EXECUTIVE FUNCTION** | Page 8

**NEUROPSYCHOLOGY & MEMORY** | Page 9

**PERSONALITY** | Page 14

**DEPRESSION & ANXIETY** | Page 19

**MEDICAL** | Page 22

**DEVELOPMENT** | Page 25

**OCCUPATIONAL THERAPY** | Page 26

**SPEECH** | Page 27

**ACHIEVEMENT** | Page 28

**BEHAVIOR** | Page 30

**CAREER** | Page 32

**TRAINING & WORKSHOPS** | Page 34



# Bayley Scales of Infant and Toddler Development | Fourth Edition India

## Bayley-4 India

Nancy Bayley, PhD, Glen P. Aylward, PhD, ABPP



The Bayley-4 Scales of Infant and Toddler Development is a comprehensive assessment tool designed to identify developmental delays in young children. It has been adapted and standardised for use in India across six languages: English, Hindi, Kannada, Marathi, Tamil, and Bengali. The Bayley-4 INDIA provides culturally relevant norms for the Cognitive, Language, and Motor scales.

**Age Range:** 16 days to 42 months

**Publication Date:** 16 days to 42 months

**Qualification Level:** B

**Completion Time:** 30 to 70 minutes

**Administration:** Paper-and-pencil

**Q-global:** Norms only (web-based)

### Scores/Interpretation:

Subtest level scaled scores, domain level composite scores, percentile ranks, confidence intervals, developmental age equivalents, and growth scale values



**Cognitive:**  
Visual preference, attention, memory, sensorimotor, exploration and manipulation, concept formation



**Motor:**  
Fine motor and gross motor subtests



**Language:**  
Receptive and expressive language subtests



**Social-Emotional:**  
Communicating needs, self-regulation using emotional signals



**Adaptive Behavior:**  
Listening and Understanding, Talking, Caring for Self, Relating to Others, and Playing

## Benefits

- Includes cultural adaptations for India
- Administration available in English and 5 Indian languages
- Includes norms for India
- Use caregiver responses to support the scoring of certain items
- Determine the need for further in-depth assessment
- Administer one or more domain subtests individually

## Features

- Adaptations to item content and images, to make it suitable for India
- Translation into Hindi, Kannada, Marathi, Tamil, and Bengali
- Normative data for India, for the Cognitive, Language and Motor Scales
- Includes content updates, as part of the latest version of the Bayley-4 scales
- Based on research and user feedback
- Clinical Groups studies

### Available in 6 Languages:

English

Hindi

Kannada

Marathi

Tamil

Bengali

## Get yourself trained in Bayley 4-India

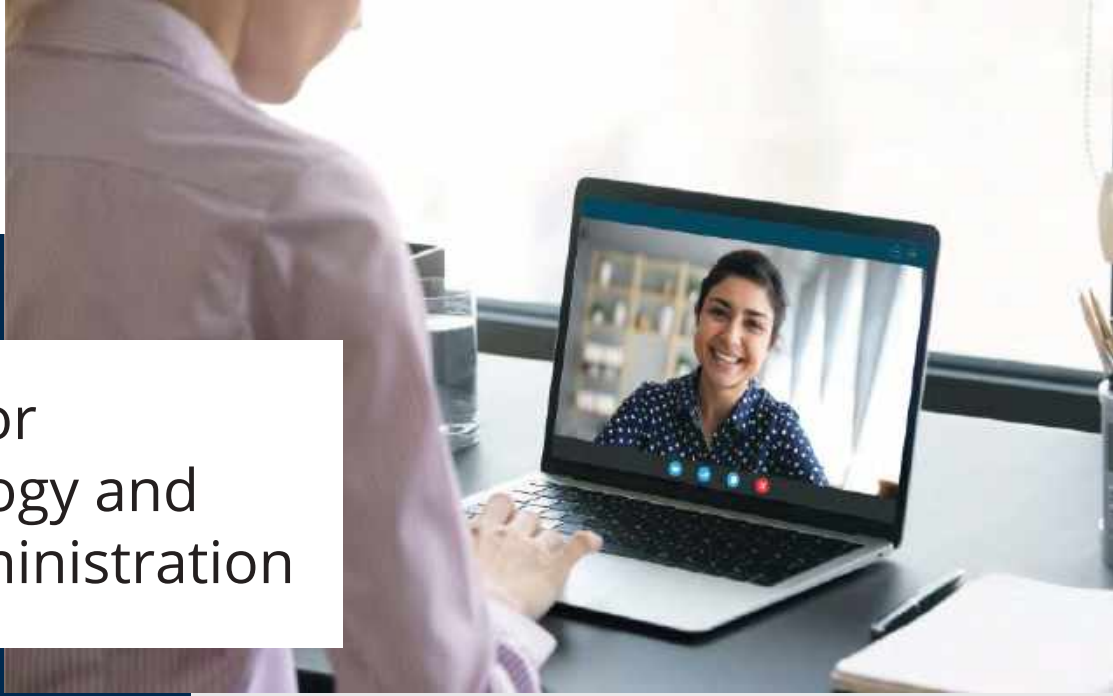
Learn about administration, scoring and interpretation of the assessment

### Eligibility Criteria

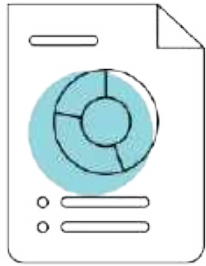
Paediatricians and Paediatric trainees, Neonatologists, Psychiatrists and Psychiatric trainees, Psychologists, Physiotherapists & Occupational Therapists, Researchers, Speech and language therapists, social workers, Early interventionists, and any health professional involved in the detailed developmental assessment of infants and young children.

### Benefits

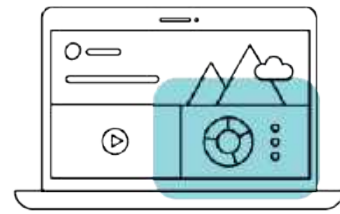
- Valuable knowledge on the application of Bayley- IV India in different settings and its relevance for your current professional practice.
- Crucial knowledge of the changes in the latest edition.
- Learn the administration and interpretation of the latest edition of the assessment



## Resources for Telepsychology and Remote Administration



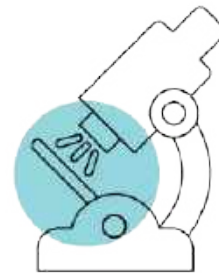
Test-specific guidance  
documents



75+ digital products  
available



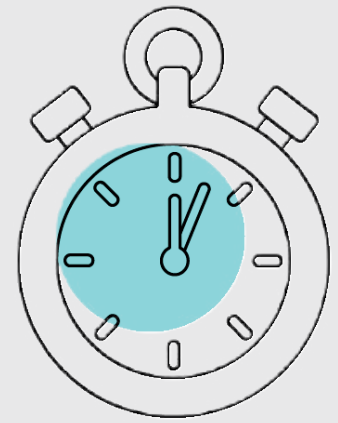
Training and webinar  
videos



Robust scientific and  
practical resources

**Visit [PearsonAssessments.com/telepractice](https://pearsonassessments.com/telepractice)**

For further information about qualification criteria please visit:  
<https://pearsonclinical.in/qualifications-policy/>



## Q-global™

What could you do with 40% of your time back?

### The world around you is going digital!

We'd like to help you keep in step, with our psychological assessment practice.

Q-global™ is our digital assessment platform for the administration, scoring and reporting of Pearson assessments.

### Why should you consider integrating Q-global™?

**Portable:** Multiple tests are available on single platform.

**Secure:** Examinee data is protected.

**Convenient:** Quickly organise; Conduct test and generate reports.

**Time-saving:** Easily manage assessments, automated scoring & reporting.

**Affordable:** Pay per test and subscription, making it a cost-effective solution.

### Uses of Q-global™

**Schools:** As a school-wide solution to address the mental-health needs of students.

**Hospitals:** As a digital solution for OPD and in-patient services in Psychiatry and Psychology Departments.

**Individual Practice:** As an affordable digital assessment platform that can be integrated easily in one's practice in Clinical Psychology, Education and allied fields.

**Government:** As an assessment delivery platform for government programs in mental-health and education.

To know which assessments are currently available on Q-global™ and for more information, visit [www.pearsonclinical.in/q-global/](http://www.pearsonclinical.in/q-global/)  
If you are new to digital assessment platforms, access our free online recorded training modules.

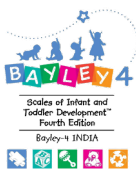
**Anytime,  
Anywhere**



## Pearson Assessments normed for India



### Bayley Scales of Infant & Toddler Development, Fourth Edition - India



A comprehensive assessment tool designed to identify developmental delays in young children. It has been adapted and standardised for use in India across six languages: English, Hindi, Kannada, Marathi, Tamil, and Bengali.

### Wechsler Intelligence Scale for Children, Fourth Edition - India



Helps measure a child's intellectual ability.

### Wide Range Achievement Test, Fifth Edition - India



Only available from Pearson

It measures and monitors fundamental reading, spelling, and math skills.

### Shaywitz DyslexiaScreen™ INDIA



It is an efficient, and user-friendly dyslexia test for K-3 students.

**Wechsler Memory Scale - Third Edition**



Assess verbal and non-verbal memory abilities in older adolescents and adults.

**Raven's Standard Progressive Matrices with India Norms Supplementary Booklet**



Measure non-verbal aspects of general ability.

**Wechsler Abbreviated Scale of Intelligence, Second Edition, India**



It provides a brief, reliable measure of cognitive ability for use in clinical.

**Raven's CPM/CVS HINDI**



Measure non-verbal and verbal aspects of general ability in Hindi-speaking children.

**Wechsler Adult Intelligence Scale - Fourth Edition, India**



Helps measure Adult's intellectual ability.

**Raven's - Educational CPM/CVS, India Edition**



Measures non-verbal and verbal aspects of general ability.

# | Cognition

These tools provide reliable data on a person's information processing skills such as speed, memory and storage, retrieval of information, reasoning abilities, and problem solving.



## **Kaufman Assessment Battery for Children, Second Edition Normative Update**

Kaufman Assessment Battery for Children | Second Edition Normative Update (KABC™ - II NU) is a culturally fair ability test for all children. It is an effective and individually administered measure of cognitive ability.

- █ Author: Alan S Kaufman and Nadeen L Kaufman     █ Qual: C
- █ Age Range: 3 years to 18 years                      █ Digital: Yes
- █ Publication Date: KABC-II 2004 KABC-II NU March 2018



## **The Wechsler Abbreviated Scale of Intelligence® Second Edition (WASI-II)**

WASI-II, a revision of the WASI™, provides a brief, reliable measure of cognitive ability in clinical, educational, and research settings. WASI-II maintains the original format and structure but offers greater clinical utility and efficiency.

- █ Author: David Wechsler     █ Age Range: 6 years to 90 years 11 months
- █ Qual: B                      █ Digital: Yes                      █ Publication Date: 2011



## Raven's Educational Coloured Progressive Matrices/ Raven's Coloured Vocabulary Scales, India (English)

Raven's Progression matrices and Vocabulary Scales enjoy a long and famous history assessing children's general cognitive abilities. The Colored Progressive Matrices (CPM) usefully provide an assessment of nonverbal ability, an important feature for India's linguistically and culturally diverse population. The Crichton Vocabulary Scales (CVS) provides scores in the verbal domain.

- Author: John C Raven et al
- Administration: Individual - 30 minutes
- Age Range: 4 years to 11 years
- Qual: B
- Digital: No



## Raven's Educational Coloured Progressive Matrices/ Raven's Coloured Vocabulary Scales, India (Hindi)

Raven's CPM/CVS fills a long-felt gap in ability tests that cater to populations not adequately exposed to the English-language. Translation of test instructions and CVS Word Card in seven major Indian languages empowers you with a more culturally fair test that can be administered in a vernacular language your client understands.

- Author: John C Raven et al
- Qual: B
- Digital: No
- Age Range: 4 years to 11 years



## Wechsler® Preschool & Primary Scale of Intelligence, Fourth Edition (WPPSI®-IV)

Rooted in contemporary theory and research, WPPSI®-IV is an innovative measure of cognitive development for young children. Reporting includes a summary of the child's background, test behaviors, interpretation of scores, recommendations, and optional parent report.

- Author: David Wechsler
- Qual: C
- Publication Date: 2012
- Digital: Yes
- Age Range: 2 years 6 months to 7 years 7 months



## Wechsler® Adult Intelligence Scale, Fourth Edition (WAIS-IV) India

WAIS-IV is adapted and standardised for India in response to the shifting demographic and clinical landscape. WAIS-IV India provides subtest and composite scores that represents general intellectual ability (i.e., Full Scale IQ).

Author: David Wechsler    Age Range: 16 years to 90 years 11 months

Qual: C    Digital: Yes    Publication Date: 2008



## Wechsler Intelligence Scale for Children - Fourth Edition (WISC-IV) India

WISC-IV is a gold-standard assessment used for intellectual assessment globally and across India. The India normed edition of the WISC-IV is used to obtain a valid and comprehensive profile of a child's cognitive strength and weaknesses in the Indian context to ensure timely and appropriate intervention.

Author: David Wechsler    Age Range: 6 years to 16 years 11 months

Qual: C    Digital: Yes    Publication Date: 2003



## Wechsler® Nonverbal Scale of Ability

Wechsler® Nonverbal Scale of Ability is a nonverbal measure of ability for culturally and linguistically diverse groups. It is ideal for nonverbal measurement of ability among individuals who are neither English-language nor Spanish-language proficient, or who have other language considerations.

Author: David Wechsler and Jack A. Nagleiri    Publication Date: 2003

Age Range: 4 years to 21 years 11 months    Qual: C    Digital: No



# | Executive

These tools measure a person's ability to organise, focus, prepare, monitor, modify their problem-solving approach and regulate their behavior.



## **Brown Executive Function/Attention Scales (Brown EF/A Scales™)**

Brown EF/A Scales helps screen and assess a wider range of impairments of executive functioning. It also measures DSM-5 symptoms of ADHD along with less apparent impairments of executive functioning.

- █ Author: Thomas E. Brown, PhD
- █ Age Range: 3 years through adult
- █ Qual: B
- █ Digital: Yes
- █ Publication Date: 2018



## **Test of Everyday Attention for Children, Second Edition (TEA-Ch-2)**

TEA-Ch-2 uniquely measures separable aspects of attention. This assessment has been updated to make the testing process more fun and engaging.

- █ Author: Tom Manly, PhD, Vicki Anderson, PhD, John Crawford, Melanie George, Ian H. Robertson, PhD
- █ Publication Date: 2016
- █ Qual: B
- █ Digital: No
- █ Age Range: Children and adolescents 5-15



# Neuropsychology and Memory

Being the basis for learning at any age and a barometer for our ability to live independently as we get older, memory is a critical skill throughout our lives. These tools assess multiple factors affecting memory and provide reliable information on short and long-term memory functions in children and adults.



## **Delis Rating of Executive Functions, Adult (D-REF Adult)**

Delis Rating of Executive Functions, Adult (D-REF Adult) lets you quickly and easily administer, score, and report the frequency of observed behaviors that identify executive function problems in adults.

- Author: Dean C. Delis
- Age Range: 19 years to 79 years 11 months
- Qual: B
- Digital: Yes
- Publication Date: 2021



## **Delis Rating of Executive Functions (D-REF)**

D-REF lets you quickly and easily administer, score, and report the frequency of observed behaviors that identify executive function problems in children and adolescents.

- Author: Dean C. Delis
- Age Range: 5 years to 19 years
- Qual: B
- Digital: Yes
- Publication Date: 2012



## NEPSY<sup>®</sup>, Second Edition

The NEPSY<sup>®</sup>, Second Edition is the only measure that allows clinicians to create tailored assessments across six domains specific to a child's situation. In addition, NEPSY-II results provide information relating to typical childhood disorders, enabling accurate diagnosis and intervention planning for success in school and at home.

- Author: Marit Korkmam, Ursula Kirk and Sally Kemp
- Qual: C
- Digital: No
- Age Range: 3 years to 16 years 11 months
- Publication Date: 2007



## Wechsler<sup>®</sup> Memory Scale, Fourth Edition (WMS-IV)

WMS-IV is the most widely used scale of adult memory. In response to changing demographics, increased caseload, and new research and clinical needs, this latest edition of the memory test includes four new subtests and modifications to three existing subtests. This edition was co-normed with the WAIS<sup>®</sup>-IV.

- Author: David Wechsler
- Age Range: 16 years to 90 years 11 months
- Qual: C
- Digital: Yes
- Publication Date: 2009



## California Verbal Learning Test Children's Version (CVLT-C)

The CVLT<sup>®</sup> - Children's Version is used to assess verbal learning and memory in children and adolescents. Useful in various settings to identify learning and memory difficulties, isolate deficient learning strategies, and assist in designing remediation programs.

- Author: Dean C. Delis, Edith Kaplan, Joel H. Krammer and Beth A Oben
- Age Range: 5 years to 16 years 11 months
- Digital: Yes
- Qual: C
- Publication Date: 1994



## Wide Range Assessment of Memory and Learning, Third Edition (WRAML-3)

WRAML-3 measured short and long-term memory functioning and the ability to learn new material in children and adults. This engaging lifespan assessment includes updated norms, content, and artwork reflective of today's population.

- Author: Wayne Adams and David Sheslow
- Qual: C
- Digital: Yes
- Age Range: 5 years to 90 years 11 months
- Publication Date: 2021



## Delis-Kaplan Executive Function System™ (D-KEFS™)

D-KEFS™ is the first nationally standardised set of tests to evaluate higher-level cognitive functions in children and adults.

- Author: Dean C. Delis, Edith Kaplan and Joel H. Kramer
- Qual: C
- Age Range: 8 years to 89 years
- Digital: No
- Publication Date: 2001



## Cognitive Linguistic Quick Test-Plus

The criterion-referenced Cognitive Linguistic Quick Test (CLQT™+) quickly assesses strengths and weaknesses in five cognitive domains and adds an optional administration path for people with aphasia.

- Author: Nancy Helm-Estabrooks
- Publication Date: 2001 (CLQT); 2017 (CLQT+)
- Age Range: 18 years to 89 years 11 months
- Digital: Yes
- Qual: B



## Repeatable Battery for the Assessment of Neuropsychological Status Update (RBANS Update)

Offering valuable enhancements, the RBANS® Update is a brief, individually administered battery to measure cognitive decline or improvement.

- Author: Christopher Randolph
- Age Range: 12 years to 89 years 11 months
- Qual: B
- Digital: No
- Publication Date: 2012



## Wechsler Memory Scale - Third Edition, India (WMS-III INDIA)

WMS-III INDIA assesses verbal and non-verbal memory abilities in older adolescents and adults. With the WMS-III now adapted to India, use this internationally popular comprehensive test battery to assess learning and memory for your professional needs.

- Author: David Wechsler
- Qual: C
- Digital: Yes
- Age Range: 16 years to 89 years
- Publication Date: 2003



## Test of Premorbid Functioning

Test of Premorbid Functioning estimates an individual's premorbid cognitive and memory functioning. A revised and updated version of the Wechsler Test of Adult Reading™, TOPF helps predict pre-injury IQ and memory abilities.

- Age Range: 16 years to 90 years
- Digital: Yes
- Qual: C
- Publication Date: 2009



## California Verbal Learning Test®<sup>®</sup>, Third Edition (CVLT-3)

CVLT-3 is the most comprehensive assessment of verbal learning and memory for older adolescents and adults. In the assessment, an examinee listens to a series of words and is then asked to recall the terms and category they belong to.

- Author: Dean C. Delis, Edith Kaplan and Joel H. Kramer
- Qual: C
- Age Range: 16 years to 90 years
- Digital: Yes
- Publication Date: 2017



## Cogmed Working Memory Training

Cogmed Working Memory Training (Cogmed) provides an evidence-based program for helping children, adolescents, and adults sustainably improve attention by training their working memory. Cognitive neuroscience, combined with innovative computer game design and close professional support, enables Cogmed to deliver substantial and lasting benefits to clients.

This training is the most scientifically validated cognitive intervention for working memory and attention deficits. Working memory is key to the brain's processing capacity. It is vital for concentration, reasoning, and learning.

With students studying from home, there is an increase in them facing attention and memory issues. Cogmed training can be done remotely and keeps the children and adults engaged.

**Partner with us** and offer Cogmed to your clients/students as a part of your practice or in school. Becoming a Cogmed Coach will give you access and support to a program that will add more value to your clients/students.

For more information, visit [www.cogmed.com](http://www.cogmed.com).

Age Range: 4 years and above

Qual: B

Digital: Yes

Reach out to us to learn more

1800123463512 | [info@pearsonclinical.in](mailto:info@pearsonclinical.in) | [www.pearsonclinical.in](http://www.pearsonclinical.in)



# | Personality

Get insights toward clinical diagnoses and treatment for a variety of disorders by measuring personality traits. Our assessments are regularly used for psychotherapy, forensic evaluations, presurgical evaluations, pre-employment evaluations, college counselling programs, substance abuse programs, and criminal justice/corrections.



## Minnesota Multiphasic Personality Inventory - Second Edition (MMPI®-2)

Clinicians use MMPI®-2 to assist with the diagnosis of mental disorders and the selection of appropriate treatment methods. MMPI has supported clinicians since its publication in 1989.

Author: James N. Butcher, PhD, John R. Graham, PhD, Yossed S. Ben-Porath, PhD, Auke Tellegen, PhD, W. Grant Dahlstrom, PhD, Beverly Kaemmer, Coordinator for the PressAuke Tellegen, PhD

Publication Date: 1989    Time: 60-90 min    Qual: C, QG & Paper-Pencil

Age Range: 18 years and above



## Minnesota Multiphasic Personality Inventory - Second Edition - Restructured Form® (MMPI-2-RF®)

MMPI-2-RF® an empirically validated, psychometrically up-to-date assessment supported by a comprehensive body of ever-growing research. Composed of 338 items, the MMPI-2-RF enhances clinical effectiveness and efficiency.

Author: Yossef S. Ben-Porath, PhD, Auke Tellegen, PhD    Time: 30-50 min

Age Range: 18 years and above

Publication Date: 2008

Qual: C, QG & Paper-Pencil



## Minnesota Multiphasic Personality Inventory - Adolescent - Restructured Form® (MMPI-A-RF®)

Clinical, counselling and school psychologists can use MMPI-A-RF® to assess major manifestations of adolescents' psychological dysfunction. It is the most up-to-date and brief MMPI adolescent assessment supporting diagnosis and treatment planning in various settings.

Author: Robert P. Archer, PhD, Richard W. Handel, PhD, Yossef S. Ben-Porath, PhD, Auke Tellegen, PhD

Publication Date: 2016

Age Range: 14 years to 18 years

Qual: C, QG & Paper-Pencil

Time: 25-30 min computer-administered; 30-45 min paper and pencil



## Minnesota Multiphasic Personality Inventory® - Adolescent (MMPI®-A)

MMPI®-A, published in 1992, provides an empirically based measure of adolescent psychopathology with age-specific scales and tailored reports.

Author: James N. Butcher, PhD, Carolyn Williams, PhD, John R. Graham, PhD, Robert P. Archer, PhD, Auke Tellegen, PhD, Yossef S. Ben-Porath, PhD, Beverly Karmmer, Coordinator for the Press

Publication Date: 1992 (Manual), 2006 (Manual Supplement)

Age Range: 14 years to 18 years

Time: 60 min

Qual: C, QG & Paper-Pencil



## Millon® Adolescent Personality Inventory (MAPI®)

Suitable for various mental health and guidance professionals in various settings, MAPI® assesses personality patterns, expressed concerns, and behavioral correlations.

Author: Theodore Millon, PhD, DSc, Catherine J. Green, PhD, Robert B. Meagher Jr., PhD

Age Range: 13 years to 18 years

Qual: C

Publication Date: 2016

Time: 20-30 min (150 true/false items)

Administration: Paper-and-pencil, computer or online administration



## Millon® Pre-Adolescent Clinical Inventory (M-PACI)

M-PACI identifies emerging personality styles and current clinical issues faced by today's youth and helps the clinician understand what is preventing them from thriving.

- Author: Theodore Millon, PhD, DSc, Robert Tringone, PhD, Carrie Millon, PhD, Seth Grossman, PsyD
- Time: 15-20 min (97 true/false items)
- Age Range: 9 years to 12 years
- Qual: C
- Publication Date: 2005
- Administration: Paper-and-pencil, online administration



## Millon® College Counseling Inventory (MCCI®)

MCCI® is a multidimensional personality assessment that can help address struggling students' concerns and get them back to a healthy state of mind.

- Author: Theodore Millon, PhD, DSc, Robert Tringone, PhD, Carrie Millon, PhD, Seth Grossman, PsyD
- Age Range: 16 years to 40 years
- Publication Date: 2006
- Time: 20-25 min (150 items, Likert scale)
- Administration: Paper-and-pencil, online administration
- Qual: C



## Millon® Index of Personality Styles, Revised (MIPS® Revised)

MIPS® Revised assesses normally functioning adults experiencing work, family, or social relationship difficulties. It can be used in both counselling and employment settings.

- Author: Theodore Millon, PhD, DSc
- Time: 25-30 min (180 true/false items)
- Age Range: 18 years and older
- Qual: B
- Publication Date: 2003
- Administration: Paper-and-pencil, computer or online administration



## The Millon® Clinical Multiaxial Inventory-IV

MCMCI-IV comprehensively identifies the level of an adult's emotional, behavioral, or interpersonal functioning. Used in multiple settings including therapeutic, medical, government, and forensics, MCMCI-IV insights help you identify deeper clinical issues, better equipping you to build a therapeutic alliance and make better treatment decisions. Based on Dr. Theodore Millon's Evolutionary Theory, its interpretive reports provide an in-depth analysis of personality patterns and symptom dynamics, and include suggestions for therapeutic management.

- Age Range: 18 years and above
- Time: 25-30 min
- Qual: C



## Minnesota Multiphasic Personality Inventory - Third Edition (MMPI®-3)

A new assessment for mental health, medical forensic, and public safety settings, the MMPI® is the most up-to-date personality assessment available for mental health, forensic, and public safety settings. The test is modernised for today's clients and provides new norms and updated items and scales. The MMPI-3 continues to build on the history and strengths of the MMPI instruments to provide an empirically validated, psychometrically relevant standard for psychological assessment.

■ Author: Yossef S. Ben-Porath, PhD, Auke Tellegen, PhD      ■ Time: 25-50 min  
■ Qual: C ■ Administration: Q-global™, paper and pencil ■ Publication Date: 2020

### KEY FEATURES:

- New, nationally representative English-language normative sample - The MMPI-3 normative sample is updated for the first time since the mid-1980s and designed to match U.S. census projections for race and ethnicity. It includes 1,620 individuals (810 men and 810 women) ages 18 and older from diverse communities throughout the United States.
- New and updated items and scales - The MMPI-3 includes 72 new and 24 updated items used to develop new scales (Combined Response Inconsistency, Eating Concerns, Compulsivity, Impulsivity, and Self-Importance) and to update existing MMPI-2-RF scales.
- Comparison groups - Descriptive data from a broad range of settings make it possible to compare an individual's results with relevant mental health, medical, forensic, and public safety settings.
- Administration time: Only 25-35 minutes to administer by computer, and 35-50 minutes by paper and pencil.
- Detailed analyses reported in the MMPI-3 Technical Manual indicate that cover 450 peer-reviewed MMPI-2-RF publications can guide the interpretation of updated MMPI-3 scales.
- MMPI-3 norms closely match projected 2020 U.S. Census Bureau demographic.



## Millon<sup>®</sup> Adolescent Clinical Inventory - II (MACI<sup>®</sup>-II)

The MACI<sup>®</sup>-II was developed specifically for teens and adolescents to assess mental health and behavior concerns often unique to their age group and assist in making reliable diagnostic and treatment decisions.

Author: Theodore Millon, PhD, DSc, Robert Tringone, PhD,  
Seth Grossman, PsyD, Carrie Millon, PhD

Time: 20-25 min (160 true/false items)      Qual: C

Publication Date: March 2020      Age Range: 13 years to 18 years

Scoring Options: Q-global<sup>™</sup> web-based or Manual Scoring

Administration: Paper-and-pencil, computer, or online administration

### KEY FEATURES:

- New and improved narrative report content is simpler and better integrates results with current therapeutic practice while linking to personalized treatment.
- Three new Clinical Syndrome scales (Disruptive Mood Dysregulation, Post-Traumatic Stress, and Reality Distortions), to reflect current clinical presentations and providing a deeper understanding of clients presenting with these concerns.
- Full normative update (N= 1,143, combined gender), more closely representing the current clinical adolescent population.
- Updated Grosman Facet Scales, including three new scales.
- Test item content uses age-appropriate language, and the reading level was lowered to 4th Grade.
- New digital end-to-end workflow with the introduction of a digital manual option via Q-global<sup>™</sup>, Pearson's web-based scoring and reporting platform.
- New and updated Noteworthy Response categories.
- Validated against expert clinician judgements and other leading self-report inventories for this age group.



# Depression and Anxiety

These assessments for depression, anxiety, and related conditions can be used throughout the entire treatment cycle, from identifying concerns to measuring progress. They are brief but thorough and can be used in various settings, from counselling to hospitals.



## Beck Scale for Suicide Ideation® (BSS®)

BSS® is an evaluation that helps measure a broad spectrum of attitudes and behaviors clinicians routinely consider when assessing a patient's suicide risk.

- Author: Aaron T. Beck      ■ Age Range: 17 years and older
- Administration: Individual - 5 to 10 min
- Scoring Option: Manual Scoring or Q-global™ Scoring & Reporting

## Multidimensional Anxiety Scale for Children™, Second Edition (MASC™-2)

MASC-2 assesses a youth's anxiety symptoms to distinguish between important symptoms and dimensions that broadband measures do not capture.

- Author: John S. March, M.D., MPH      ■ Publication Date: 2012
- Age Range: 8 years to 19 years

## **Beck Depression Inventory®-2 (BDI®-2)**

BDI-2 is a brief, criteria-referenced assessment for measuring depression severity. This new edition of the Beck Depression Inventory, the most widely used instrument for detecting depression, takes just five minutes to complete and is more clinically sensitive than ever. It consists of 21 items to assess the intensity of depression in clinical and non-clinical patients. Each item is a list of four statements arranged in increasing severity about a particular symptom of depression. It can be used in a variety of clinical settings by most Allied Health clinicians.

- Author: Aaron T. Beck, Robert A Steer and Gregory K Brown
- Languages: Hindi, Kannada, Tamil, Marathi, and Malayalam
- Publication Date: 1996                      ■ Age Range: 13 years to 80 years
- Administration: Individual - 5 minutes
- Scoring Options: Manual Scoring or Q-global™ Scoring & Reporting

---

## **Beck Youth Inventories™, Second Edition (BYI-2™)**

BYI-2™ uses five self-report inventories to assess symptoms of depression, anxiety, anger, disruptive behavior, and self-concept in children and adolescents. Five inventories (Depression, Anxiety, Anger, Disruptive Behavior, and Self-Concept) each contain 20 questions about thoughts, feelings, and behaviors associated with emotional and social impairment in youth. In addition, children and adolescents describe how frequently the statement has been true for them during the past two weeks, including today.

- Author: Judith S Beck, Aaron T Beck, John Jolly and Robert Steer
- Age Range: 7 years to 18 years
- Administration: Individual or group - 5 to 10 min per inventory



## Beck Hopelessness Scale® (BHS®)

BHS® measures attitudes about the future. It can be used in various clinical settings and administered with the BDI®-2 and BSS® for a complete evaluation.

- Author: Aaron T. Beck    ■ Age Range: 17 years to 80 years (recommended)
- Time: 5-10 min; self-administered or verbally by a trained administrator
- Publication Date: 1988, 1993
- Scoring Options: Manual Scoring or Q-global™ Scoring & Reporting
- Administration: Paper-and-pencil, computer, or online administration



## Beck Anxiety Inventory® (BAI®)

BAI® is a brief, criteria-referenced assessment for measuring anxiety severity and level. With the Beck Anxiety Inventory, patients respond to 21 items rated on a scale from 0 to 3. Each item is descriptive of subjective, somatic, or panic-related symptoms of anxiety. BAI helps assess a broad range of emotional, physical, cognitive, and behavioral symptoms that represent important dimensions of anxiety and has been found to dominate well between anxious and non-anxious diagnostic groups. Thus, it can be used in a variety of clinical settings by most Allied Health clinicians.

- Author: Aaron T. Beck and Robert A Steer
- Publication Date: 1990, 1993    ■ Age Range: 17 years to adult
- Administration: Individual - 5 to 10 min
- Scoring Options: Manual Scoring or Q-global™ Scoring & Reporting

# | Medical

Medical conditions and mental health are often connected, and it's important to look at various biopsychosocial factors before designing treatment plans. Our health psychology tests are used to identify the psychological, behavioral, and emotional factors that could impact a patient's response to medical care. They are also reliable predictors of positive treatment outcomes for many procedures, such as gastric bypass and spinal cord stimulation surgery.



## Brief Symptom Inventory® (BSI®)

The efficient Brief Symptom Inventory® provides patient-reported data to support clinical decision-making at intake and during treatment in various settings.

- | Author: Leonard R. Derogatis
- | Age Range: 13 years and older
- | Qual: B
- | Digital: Yes
- | Publication Date: 1993



## Brief Symptom Inventory® 18 (BSI 18®)

A shortened form of the BSI, the Brief Symptom Inventory® 18 gathers patient-reported data to measure psychological distress and psychiatric disorders in medical and community populations.

- | Author: Leonard R. Derogatis
- | Age Range: 18 years and older
- | Qual: B
- | Digital: Yes
- | Publication Date: 2001





## Millon® Behavioral Medicine Diagnostic (MBMD)

The Millon® Behavioral Medicine Diagnostic is an assessment of psychosocial factors that may support or interfere with a medical patient's course of treatment. Brief yet comprehensive, the inventory includes three norm groups (General Medical, Pain, and Bariatric patients) and 165 items to help gather a range of information that might otherwise require a battery of instruments to obtain. Interpretive and Profile Reports are also available.

- Author: Theodore Millon et al. I.
- Qual: C
- Digital: Yes
- Age Range: 18 years to 65 years
- Publication Date: 2001



## Symptom Checklist-90-Revised (SCL-90-Revised)

SCL-90-Revised® helps evaluate a broad range of psychological problems and symptoms of psychopathology. It is also useful in measuring patient progress or treatment outcomes.

- Author: Leonard R. Derogatis
- Qual: B
- Digital: Yes
- Age Range: 13 years and older
- Publication Date: 1994



## Quality of Life Inventory (QOLI®)

QOLI® is a psychological assessment of well-being and satisfaction with life. The QOLI assesses positive mental health and happiness and yields an overall score based on the "Sweet 16" areas that make up the quality of life, including love, work and play.

- Author: Michael B Frich
- Qual: A
- Digital: Yes
- Age Range: 17 years and above
- Publication Date: 1994

# Development

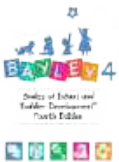
These well-researched assessments help you identify and remediate a wide range of development issues, with game-like activities that make the evaluation enjoyable for those you serve.



## Bayley Scales of Infant and Toddler Development™, Fourth Edition (Bayley-4)

Bayley™-4 is the most comprehensive assessment tool for determining developmental delays in children.

█ Author: Nancy Bayley, PhD, Glen P. Aylward, PhD, ABPP
 █ Digital: Yes  
█ Age Range: 16 days to 42 months
 █ Qual: B
█ Publication Date: 2019



## Bayley Scales of Infant and Toddler Development Screening Test (Bayley 4 Screening)

Bayley-4 Screening Test can quickly determine if a child is on track developmentally or if further, a more comprehensive assessment is needed.

█ Author: Nancy Bayley, PhD, Glen P. Aylward, PhD, ABPP
 █ Digital: No  
█ Age Range: 16 days to 42 months
 █ Qual: B
█ Publication Date: 2019



## Mullen Scales of Early Learning (Mullen)

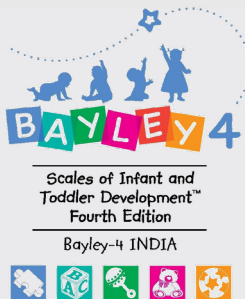
Mullen Scales of Early Learning is a developmentally integrated system that assesses language, motor, and perceptual abilities, measures cognitive ability and motor development quickly and reliably.

█ Author: Eileen M. Mullen
 █ Qual: B
█ Digital: No  
█ Age Range: Birth to 68 months
 █ Publication Date: 1995



Turn challenges into strengths with tools that lead the way

As an occupational therapist we recognize the difficulties you face as you work to identify challenges and strengths, and we have the tools and resources you need to do just that.



Contact us to learn more

Pearson Clinical & Talent Assessments

1800123463512 | [info@pearsonclinical.in](mailto:info@pearsonclinical.in) | [www.pearsonclinical.in](http://www.pearsonclinical.in)

For further information about qualification criteria please visit: <https://pearsonclinical.in/qualifications-policy/>



The speech and language tools you need to help them communicate effectively

From birth, we learn to communicate our basic needs, and over time, more complex thoughts and emotions. When communication issues are present, their effects can be far-reaching through an individual's life. As a speech-language pathologist, you've made it your mission to identify and help to mitigate those issues, allowing each of your clients to communicate effectively.

In order to support you in your work, we have developed some of the tools you need to help those you serve, as well as resources to use each tool effectively.

**Please take some time to explore some of our popular speech and language solutions:**



For further information about qualification criteria please visit:  
<https://pearsonclinical.in/qualifications-policy/>



# | Achievement

Identifying learning disabilities in children and adults is the first step in getting them the support they need. These tools give you reliable and valid information to measure academic skills relative to reading, writing, math, and fluency - and put them on the path to success.

## **Wide Range Achievement Test, Fifth Edition - India (WRAT 5) INDIA**

Only available from Pearson

WRAT 5™ provides an accurate and easy-to-administer way to assess and monitor the reading, spelling, and math skills and helps identify possible learning disabilities.

 Author: Gary S. Wilkinson, PhD, Gary J. Robertson, PhD  Digital: Yes

 Age Range: Individuals 6:0-19:11  Qual: B  Publication Date: 2017



## **Wechsler Individual Achievement Test - Fourth Edition (WIAT-4)**

WIAT-4 is an individually administered achievement test for use in various clinical, education, and research settings.

 Author: David Wechsler  Qual: B  Digital: Yes

 Age Range: Individuals 4:0-50:11  Publication Date: Fall 2020



## Woodcock Reading Mastery Test, Third Edition (WRMT-III)

Woodcock Reading Mastery Tests Third Edition (WRMT-III) retains the format and structure of its predecessor while expanding the test's range to offer you even more diagnostic capability. WRMT-III is an individual assessment of reading skills for children and adults.

- Author: Richard W. Woodcock, EdD
- Qual: B
- Digital: Yes
- Age Range: 4:6-79:11; Grades K-12
- Publication Date: 2011



## KTEA-3 Kaufman Test of Educational Achievement (KTEA 3)

KTEA™-3 is an individually administered battery that provides in-depth assessment and evaluation of key academic skills.

- Author: Alan S. Kaufman, PhD, Nadeen L. Kaufman, PhD
- Digital: Yes
- Age Range: Individuals 4:0-25:11
- Qual: B
- Publication Date: 2014

# | Behavior

Frequently, the reason behind a child's action runs deeper than a simple desire to be disruptive and identifying and treating what lies below the surface can drastically improve academic success and school climate. These assessments are key in helping to identify ADD/ADHD, Autism, Oppositional Defiance Disorder, depression, anxiety, and the multitude of other factors that can affect your students' Behavior.



## **Behavior Assessment System for Children, Third Edition (BASC-3)**

A comprehensive set of rating scales and forms, BASC-3 helps you understand the behaviors and emotions of children and adolescents.

■ Author: Cecil R. Reynolds, PhD, Randy W. Kamphaus, PhD

■ Age Range: 2:0-21:11 (TRS and PRS); 6:0 through college age (SRP)

■ Qual: B

■ Digital: Yes

■ Publication Date: 2015



## **Behavior Assessment System for Children, Third Edition - Behavioral and Emotional Screening System (BASC-3 BESS)**

BASC-3 BESS offers a reliable, quick, and systematic way to determine children and adolescents' behavioral and emotional strengths and weaknesses in preschool through high school.

■ Author: Cecil R. Reynolds, PhD, Randy W. Kamphaus, PhD

■ Age Range: 3:0-18:11 (Teacher and Parent); 8:0-18:11 (Self-Report)

■ Qual: B

■ Digital: Yes

■ Publication Date: 2015



## Behavior Assessment System for Children - Third Edition, (BASC-3) Intervention Guide & Materials

BASC-3 Intervention Guide & Materials provides school psychologists with extensive information on the most common behavioral and emotional issues.

Author: Kimberly Bannest, PhD, Cecil R. Reynolds, PhD, Randy Kamphaus, PhD

Qual: A

Digital: No

Publication Date: 2015



## Behavior Assessment System for Children, Third Edition (BASC-3) - Flex Monitor

BASC-3 Flex Monitor is a new, flexible way to monitor changes in Behavior and emotional functioning. It enables psychologists and professionals in a school or clinical environment to monitor and track the effects of behavioral intervention plans.

Author: Cecil R. Reynolds, PhD, Randy W. Kamphaus, PhD

Qual: B

Age Range: 2:0-18:11

Digital: Yes

Publication Date: 2016



## Social Skill Improvement System (SSIS)

SSIS™ Intervention Guide helps plan and implement remediation strategies directly tied to student social skill problems identified by the SSIS Rating Scales.

Author: Stephen N. Elliott, PhD, Frank Gresham, PhD

Qual: B

Age Range: 3:0-18:0

Digital: No

Publication Date: 2008



## Vineland Adaptive Behavior Scales - Third Edition (VABS-3)

VABS-3 is the leading instrument for supporting the diagnosis of intellectual and developmental disabilities. Vineland-3 not only aids in diagnosis but provides valuable information for developing educational and treatment plans.

Author: Sara S. Sparrow, PhD, Domenic V. Cicchetti, PhD, Celine A. Saulnier, PhD

Digital: Yes

Qual: B

Age Range: Birth-90 years

Publication Date: 2016



## Career Assessment

### **My Choice My Future (MCMF)**

A scientific and online career guidance solution that was developed in collaboration with senior professors and researchers from IIT-Madras.



It typically helps individuals identify the right career path by assessing their personality in-line with their career interests and choices.

Language Options: Hindi, Bengali, Kannada, Malayalam, Tamil and Telugu.

### **Career Decision-Making System (CDM)**

Unlike any conventional career guidance tool that only offers guidance, CDM, lets students self-assess their interests, abilities, and work values. This tool alone can be used to make the right career decision.



# Become a Career Solution Partner!

Over the years, we have created a network of over 200 partners/ resellers who have been helping students make informed career choices.

## What benefits will you derive as a Career Solutions Partner?

- Association with Pearson, the world's leading education company.
- Access to the best career assessment solutions which can assess every aspect of an individual such as personality, aptitude, and interest.
- All of our assessments are on online digital platforms for you to easily administer assessments from anywhere.
- Extensive service and support.

## Who can become a Career Solution Partner?

Career Counsellors, Career Counselling Centres, Overseas career consultants and counsellors, Overseas career consultancies, Education professionals/teachers, Mental Health professionals.

### To register, scan the QR code or contact us:

Call: 1800123463512

Email: [info@pearsonclinical.in](mailto:info@pearsonclinical.in)

Website: [www.pearsonclinical.in](http://www.pearsonclinical.in)

For further information about qualification criteria please visit:  
<https://pearsonclinical.in/qualifications-policy/>





# Pearson Trainings

Expert-led training and professional development

Pearson Clinical Training and Support is your reliable source of knowledge for professionals in psychology, speech and language therapy, occupational therapy, education, and early

Our courses are tailored to professionals with varying levels of experience, to ensure continued development and learning for all.

## 🕒 Delivery Options

- 📺 Live Online
- 📍 In-Person
- 📖 On-Demand

### Clinical Assessment Focused

- ✔ Wechsler Intelligence Scale for Children, Fourth Edition - India (WISC IV India)
- ✔ Wechsler Adult Intelligence Scale, Fourth Edition - India (WAIS IV India)
- ✔ Wechsler Preschool and Primary Scale of Intelligence (WPPSI IV)
- ✔ Millon Clinical Multiaxial Inventory, Fourth Edition (MCMI IV)
- ✔ Wide Range Achievement Test, Fifth Edition - India (WRAT - V India)
- ✔ Brown's Executive Functioning/Attention Scale
- ✔ Vineland - 3
- ✔ My Choice My Future (MCMF)
- ✔ Career Decision Making Inventory - Revised (CDM-R)
- ✔ Bracken School Readiness Assessment, Fourth Edition

### Solution - Focused Trainings

- ✔ Helping school children overcome Attention problems
- ✔ Emotional Difficulties in children and adolescents
- ✔ Psychological First Aid
- ✔ Bullying in Schools
- ✔ Bridging the Gap: Intergrating Socio-Emotional learning in classrooms
- ✔ Procrastination - The way forward
- ✔ Read the signs - Suicide Prevention Training Program
- ✔ Coping with Anxiety & Stress
- ✔ Academic & Educational Interventions



## Self-Placed Modules

Learn at your own pace and time. Choose your training and align it to your schedule!

● Bayley 4

● BASC 3 - Mental Health

● BASC 3 - Well-Being

● MACI-II

● MCMI – IV

● MMPI – 3

● Sensory Profile – 2

● WIAT - 4



## On-Demand Modules



Students of Psychology



Professionals of Psychology



School Mental Health and Well-Being



Organizational Mental Health and Well-Being



Early childcare professionals



Speech and Language Pathologists



Occupational Therapy



Scales of Infant and  
Toddler Development™  
Fourth Edition

Bayley-4 INDIA



## About Bayley IV India

The Bayley-4 Scales of Infant and Toddler Development has been adapted and standardized for India, in six languages: **English, Hindi, Kannada, Marathi, Tamil and Bengali.**

The Bayley -4 INDIA includes India norms for the Cognitive, Language and Motor Scales along with U.S. norms for the Social-Emotional and Adaptive Behaviour Scales. Assessment of the Cognitive, Language, and Motor domains is accomplished by administering structured items to the child and engaging the caregiver to support responses where appropriate. The Social-Emotional and Adaptive Behavior scales are administered via caregiver questionnaire which allows them to share their own observations of the child's abilities.

### Age Range

16 days to 42 months

### Language

English, Hindi, Kannada,  
Marathi, Tamil and Bengali

### Norms

Cultural adaptation and  
Norms for India

### Qualification: B



#### Cognitive:

Visual preference, attention, memory, sensorimotor, exploration and manipulation, concept formation



#### Motor:

Fine motor and gross motor subtests



#### Adaptive Behavior:

Listening and Understanding, Talking, Caring for Self, Relating to Others, and Playing



#### Language:

Receptive and expressive language subtests



#### Social-Emotional:

Communicating needs, self-regulation using emotional signals



# Partner with us for Bayley 4 Trainings

## Available Options

Self-learning e-module on Bayley 4 assessment with a focus on theoretical frameworks and application of the assessment in different settings.

## Live Online

Online learning module with live-trainer with a focus on theoretical framework, demonstration of sub-tests , scoring procedures and guidance on interpretation of reports.

## Face to Face (F2F)

In-person training with hands-on experience from the trainer with live demonstrations, scoring procedures and guidance on interpretation of reports.

# Digital Assessments Library for Universities – India (DALU-INDIA)



With the advent of New Education Policy 2020, there is a formidable shift to focus on Mental Health and well-being in educational institutions. Therefore, the demand for psychology and allied fields is going to be pertinent as many are becoming aware of the necessity of such a subject in the academic system. In India, there is a rise in intake of this subject by students at undergraduate and post-graduate levels. Hence, universities and colleges need quick and timely solutions in delivery.

Pearson Clinical Assessments for the very first time in India offers DALU – DIGITAL ASSESSMENTS LIBRARY FOR UNIVERSITIES. It is an online resource library which is available for use by students and faculties of Psychology course. It lists gold standard assessments owned by Pearson in four major domains of Psychology.

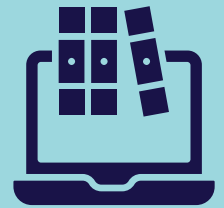
SL.NO	AREA	NAME OF THE ASSESSMENT
1	PERSONALITY	MAPI Millon Adolescent Personality Inventory
		MCMI-IV Millon Clinical Multiaxial Inventory-IV
2	BRAIN & BEHAVIOUR	D-REF Delis-Rating of Executive Function
3	ACHIEVEMENT/ABILITY	KTEA-3 Kaufman Test of Educational Achievement, Third Edition
		Wechsler Individual Achievement Test   Fourth Edition
4	MENTAL HEALTH & ADAPTIVE BEHAVIOUR	MCCI - Millon College Counseling Inventory
		BAI - Beck Anxiety Inventory
		BHS - Beck Hopelessness Scale
		BSS - Beck Scale for Suicide Ideation
		BYI-II Beck Youth Inventories Second Edition
		Symptom Checklist-90-Revised
		Quality of Life Inventory
5	SPECIAL EDUCATION NEEDS	WRAT 5 – Wide Range Achievement Test
		Brown Executive Function/Attention Scales
		Vineland Adaptive Behavior Scales   Third Edition
		Shaywitz Dyslexia Screen

## Why Should you choose Dalu?

- Digital resources are the future of education for students and professionals.
- Enables remote teaching and telehealth-based psychological assessments for universities.
- Provides access to digital manuals, stimulus books, and remote reporting tools.
- Supports email-based or self-report questionnaire delivery to parents, teachers, or students.
- A time-saving, cost-effective, and easy-to-use platform.



## DIGITAL ASSESSMENT LIBRARY



# NEW! Digital Assessment Library for University Student Mental Health

Do you have the tools to stay on top of anxiety, depression, suicidal ideation, and other mental health challenges facing your students today?

Every institution of higher education is dealing with a student mental health crisis. In an effort to make sure any college student struggling with mental health issues can be identified, Pearson has built the Digital Assessment Library (DAL) for University Student Mental Health.

Delivered online through Pearson's Q-global® platform, this library of digital assessments have been designed at an affordable subscription model so that college counselors and student mental health professionals have access to the highest quality mental health assessments at a cost effective price/price point. Conduct large scale assessments with digital administration, scoring and instant reporting facilities with this library.

### Features include:

- 12 standardized mental health assessments
- Access to Q-global web-based digital administration, scoring, and reporting
- Wide range of assessments and its usages as per plan selected.
- One simple, annual price for use with the entire student population

# Which digital mental health assessments are included?



BASC™-3 offers a set of rating scales to help evaluate the behaviors and emotions of individuals, differentiating between hyperactivity and attention problems, and measures areas for both IDEA and DSM-5 classifications. Available in Spanish.

👤 AGE 2-21 ⌚ 10-30 MIN



BASC™-3 BESS College Form provides a quick, efficient, valid, and reliable way to screen large numbers of students while guaranteeing security and privacy.

👤 AGE 18-25 ⌚ 5-10 MIN



Beck Scale for Suicide Ideation® is an evaluation that helps measure a broad spectrum of attitudes and behaviors clinicians routinely consider when assessing a patient's suicide risk.

👤 AGE 17-80 ⌚ 5 MIN



Beck Anxiety Inventory® is a brief, criteria-referenced assessment for measuring anxiety severity and level, with patients responding to 21 items rated on a scale from 0 to 3.

👤 AGE 17-80 ⌚ 5 MIN/ INVENTORY



Beck Hopelessness Scale® measures attitudes about the future. It can be administered with the BDI®-2 and BSS® for a complete evaluation.

👤 AGE 17-80 ⌚ 5 MIN



Beck Depression Inventory®-II is a brief, criteria-referenced assessment for measuring depression severity. This widely used instrument for detecting depression is more clinically sensitive than ever.

👤 AGE 13-80 ⌚ 5 MIN



The Beck Youth Inventories™, Second Edition uses five self-report inventories to assess symptoms of depression, anxiety, anger, disruptive behavior, and self-concept.

👤 AGE 7-18 ⌚ 5 MIN/ INVENTORY



BROWN EXECUTIVE FUNCTION/ATTENTION SCALES

Brown EF/A Scales™ goes beyond other measure to screen and assess a wider range of impairments of executive functioning and attention.

👤 AGE 3+ ⌚ 10-25 MIN



Delis-Rating of Executive Function and D-REF Adult let you quickly and easily administer, score, and report the frequency of observed behaviors that identify executive function problems.

👤 AGE 5-79 ⌚ 5-15 MIN/ FORM



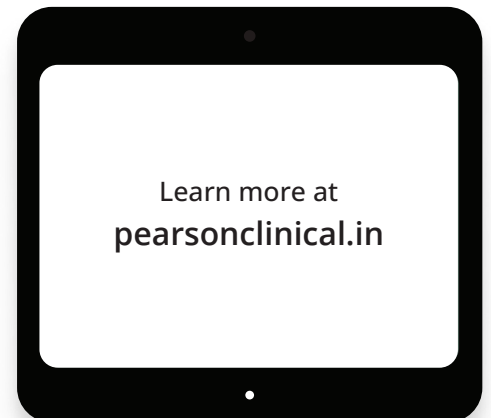
Millon® College Counseling Inventory is a multi-dimensional personality assessment that can help address struggling students' concerns and get them back to a healthy state of mind.

👤 AGE 16-40 ⌚ 20-25 MIN



Quality of Life Inventory is a psychological assessment of well-being and satisfaction with life and yields an overall score based on the "Sweet 16" areas that make up quality of life, including love, work and play.

👤 AGE 17+ ⌚ 5 MIN



1800123463512 | [info@pearsonclinical.in](mailto:info@pearsonclinical.in) | [www.pearsonclinical.in](http://www.pearsonclinical.in)

Copyright © 2026 Pearson Education, Inc. or its affiliates. All rights reserved. Pearson, BASC, BECK, Brown, D-REF, Q-global, and QOLI are trademarks, in the US and/or other countries, of Pearson plc. Millon and MCCI are a registered trademarks of DICANDRIEN, INC.



# CONTACT US FOR ANY QUERIES



PHONE

1800123463512



E-MAIL

INFO@PEARSONCLINICAL.IN



WEBSITE

WWW.PEARSONCLINICAL.IN



ADDRESS

**Pearson India Education Services Private Limited**  
37 Cunningham by MFAR, 3rd Floor, Vasant Nagar  
Cunningham Road 560052, Bangalore

***"We also distribute MHS and Riverside products."***

We service India and the Indian subcontinent markets.

